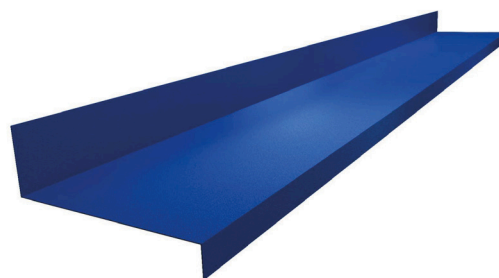
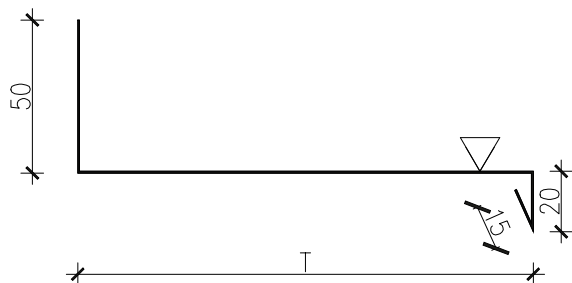


RYS.O_5

LISTWA STARTOWA MOCOWANA DO ŚCIANY
OB-ONE - 05/T

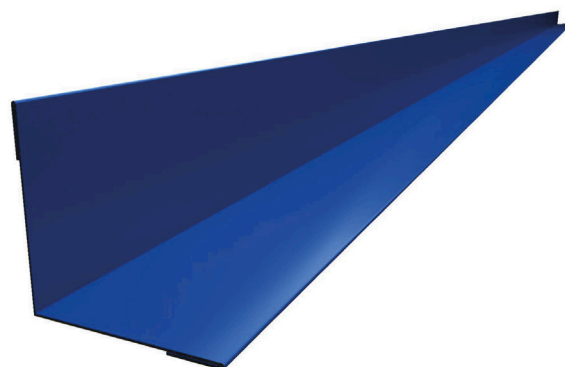
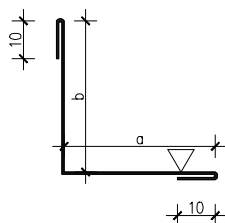


Lp.	Symbol	T[mm]	Długość [mm]	Masa [kg]
1.	OB-ONE-05/50	50	3000	1,62
2.	OB-ONE-05/60	60	3000	2,29
3.	OB-ONE-05/100	100	3000	2,57
4.	OB-ONE-05/150	150	3000	2,97
5.	OB-ONE-05/200	200	3000	3,65
6.	OB-ONE-05/250	250	3000	4,32

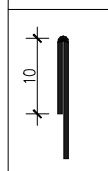
△ RAL zewn.

RYS.O_6

OBRÓBKA KĄTOWA
OB-ONE - 06/a/b



zakończenie
krawędzi



Lp.	Symbol	a[mm]	b[mm]	Długość [mm]	Masa [kg]
1.	OB-ONE-06/20/20	20	20	3000	0,81
2.	OB-ONE-06/20/40	20	40	3000	1,08
3.	OB-ONE-06/40/40	40	40	3000	1,35
4.	OB-ONE-06/40/60	40	60	3000	1,62
5.	OB-ONE-06/60/60	60	60	3000	1,89
6.	OB-ONE-06/60/80	80	80	3000	2,43

△ RAL zewn.